



LIVING PLANET FUND



LIVING PLANET FUND – EQUITY: Class A (Retail) & B (Institutional)

as at 31.12.2007

Investments in international equities, with emphasis on companies that have a proactive commitment to environmental and social issues and which are leaders in their industry sector.

Fund Portrait

- Living Planet Fund – Equity is a Sub-Fund of the “umbrella” Fund, Living Planet Fund. The Living Planet Fund is an undertaking for collective investment (“UCIT”) registered in Luxembourg in accordance with Part I of the Luxembourg Law of 20 December 2002 on undertakings of collective investment.
- The Sub-Fund is a global equity fund. It invests worldwide in companies that generate above average environmental, social and economic performance, and offer promising growth potential. The investment universe comprises both leaders and innovators. Leaders are large companies that offer the best environmental and/or social performance in their respective sectors. Innovators are smaller and younger companies whose products and services offer proven environmental benefits and high resource efficiency.
- The portfolio is geared towards the country and sector weightings as featured in the MSCI World index and presents a diversification opportunity to global equity funds in terms of its risk/return profile.

Selection Criteria

Companies considered for inclusion in the Sub-Fund are first measured on a traditional financial basis in terms of their economic potential and then subsequently measured against four sets of indicators, examples are as outlined below:

Environmental Policy

- Environmental policy
- Compliance with environmental legislation
- Published environmental impact statements
- EMS (Environmental Management System)

Production Processes

- Assessment of production processes and product life cycles, taking into account:
 - recycling
 - waste minimization
 - renewable energy
 - energy efficiency
 - water management
 - emissions of greenhouse gases
 - reduction/elimination of POPs¹ and EDCs²

Social Indicators

- Publicly available policy on social standards
- Equal employment opportunity
- Community involvement
- Proper relationship with labour, suppliers and other stakeholders

Certifications and Codes

- External certification to Standards such as:
 - ISO 14001
 - FSC (Forest Stewardship Council)
 - MSC (Marine Stewardship Council)
 - ILO (International Labour Organisation) Codes of practice

The Sub-Fund will not invest in equity or similar product of companies involved³ in the following business activities:

- production of armaments and other military products
- production and processing of tobacco
- production of alcohol
- gambling
- production of nuclear power
- genetic engineering⁴

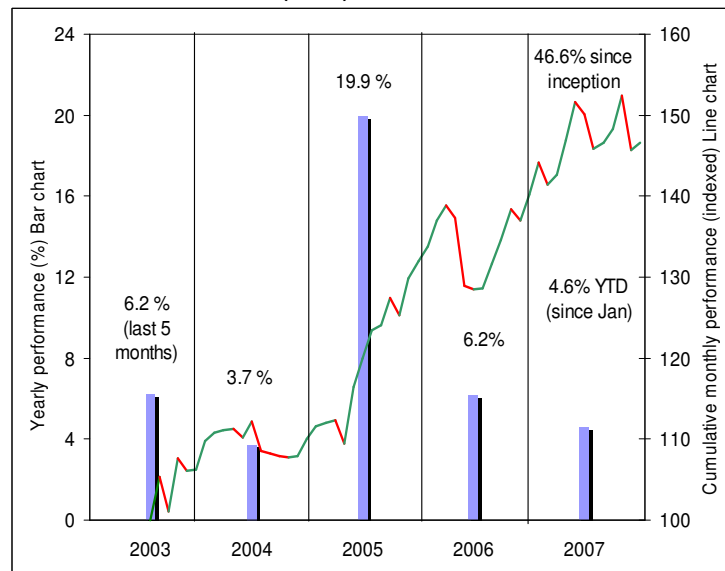
¹ Persistent Organic Pollutants

² Endocrine Disrupting Chemicals

³ Where the revenues from these activities exceed 10% of consolidated revenues.

⁴ Companies that use gene technology in the external environment, such as in agriculture.

Performance - Class A Units (Retail)



Portfolio structure (in %)

By Country – Top 10

1. United States of America	16.8
2. Germany	12.5
3. Canada	8.4
4. Switzerland	8.2
5. Denmark	7.9
6. France	5.0
7. United Kingdom	4.6
8. Japan	4.6
9. Spain	3.8
10. Sweden	3.6

By Company – Top 10

1. Q-Cells	3.6
2. Vestas Wind Systems	3.5
3. Gamesa Tecno	3.0
4. Veolia	3.0
5. Solarworld	2.9
6. IBM	2.6
7. Henkel	2.2
8. Essilor International	2.1
9. BG Group	2.0
10. CDN Pacific Railway	2.0

Examples of Leaders

Baxter International
Lindt & Sprüngli
Nokia
SAP
Westpac Banking

Examples of Innovators

Abengoa
Headwaters
Masterflex
Solarworld
Whole Foods Market

Fund Features

Management Company:	Living Planet Fund Management Company S.A.
Portfolio management:	Bank Sarasin & Cie AG
Auditors:	PricewaterhouseCoopers, Luxembourg
Fund type:	open ended
Domicile of Fund:	Luxembourg
Stock Exchange Listing:	Luxembourg Stock Exchange
Custodian Bank:	UBS (Luxembourg) S.A.
Inception date:	31 July 2003
Currency:	EUR
Close of financial year:	December 31
Issue/redemption frequency:	daily
Income distribution:	income reinvested
All-in fee per annum for Class A:	2.04%
All-in fee per annum for Class B:	1.56%
Benchmark:	MSCI World

Stock References

	Class A	Class B
Name of the Security:	Living Planet Fund – Equity Class A	Living Planet Fund – Equity Class B
Name of unit:	Class A	Class B
ISIN N°:	LU0169371266	LU0169371779
Bloomberg:	LIVPLNA LX	LIVPLNB LX
Telekurs:	1611752 LPFUND EQUITY A	1611753 LPFUND EQUITY B
Minimum investment:	500 Euros	500,000 Euros

Current Data

Total fund size (in millions):	31.92 EUR	52.97 CHF
	Class A	Class B
	in EUR	in CHF
Net asset value per unit	146.58	243.27
– High – last 12 months	152.44	252.99
– Low – last 12 months	141.35	234.59

Statistical Data (since inspection)

Beta	0.92	0.92
Correlation	0.95	0.95
Total risk in % – Funds	8.7	8.7
Total risk in % – Benchmark	9.0	9.0
Sharpe Ratio	0.7	0.8

Contact

e-mail: info@livingplanetfund.com
 Web sites: www.livingplanetfund.com
www.livingplanetcompany.com

Documentation

Copies of the fund regulations, the prospectus, the simplified prospectus as well as the annual and semi-annual reports of the Fund may be obtained free of charge at the office of:
 Living Planet Fund Management Company S.A.
 33A, Avenue J.F. Kennedy
 L – 2010 Luxembourg